

GIRLS' SWEET 16 CHAMPIONSHIP

Final

NICHOLAS COUNTY

VS.

WARREN EAST

March 27, 1993

VISITORS (Last Name, First)

NO.	WARREN EAST	Tot FG		3-POINT		FT	FTA	Rebounds			PF	TP	A	TO	BLK	S	TIME
		FG	FGA	FG	FGA			OFF	DEF	TOT							
03	RATLIFF, DEANNA	2	3	0	1	0	0	0	1	1	0	4	0	1	0	1	5:52
30	ELROD, HEATHER	3	7	0	0	2	3	1	7	8	4	8	3	6	1	1	32:00
42	BRITT, JAMIE	5	9	0	0	1	3	2	4	6	3	11	1	2	1	2	30:16
14	SMITH, ALISON	2	4	1	2	0	0	2	2	4	5	5	2	4	0	0	25:49
20	MASSEY, MIRANDA	2	10	1	5	2	2	0	1	1	2	7	3	5	0	1	28:39
44	COLE, TRACY	1	1	0	0	0	0	0	0	0	5	2	1	1	0	0	4:40
34	FISHBACK, TRESIE	0	2	0	0	0	0	0	2	2	2	0	0	0	1	0	10:41
12	HIBBITT, RHONDA	1	1	1	1	0	0	0	2	2	1	3	2	2	0	0	10:46
54	TALLEY, S.	3	4	0	0	0	0	2	1	3	2	6	0	1	0	1	11:17
TEAM REBOUNDS (INCLUDED IN TOTALS)								1	2	3							
TOTALS		19	41	3	9	5	8	8	22	30	24	46	12	22	3	6	160
TOTAL FG 1st HALF 5/10 50.0%		2nd HALF 14/31 45.2%		GAME 19/41 46.3%		DEADBALL											
3-POINT FG 1st HALF 1/1 100.0%		2nd HALF 2/8 25.0%		GAME 3/9 33.3%		REBOUNDS		2									
FREE THROWS 1st HALF 0/0 0.0%		2nd HALF 5/8 62.5%		GAME 5/8 62.5%													

HOME (Last Name, First)

NO.	NICHOLAS COUNTY	Tot FG		3-POINT		FT	FTA	Rebounds			PF	TP	A	TO	BLK	S	TIME
		FG	FGA	FG	FGA			OFF	DEF	TOT							
11	LINVILLE, RENEE	2	5	0	1	2	4	1	3	4	5	6	1	2	0	3	28:46
20	SCHANDING, E.	1	1	0	0	0	1	0	0	0	0	2	1	3	0	2	32:00
52	DENKINS, KIM	11	23	0	0	3	5	9	9	18	3	25	2	3	2	1	31:17
21	SMOOT, NIKKI	2	7	0	0	4	7	0	0	0	3	8	1	3	0	3	31:19
22	HAYTON, CHRISTIE	2	7	1	2	1	3	1	1	2	3	6	5	3	0	1	32:00
53	HOPKINS, M.	0	0	0	0	1	4	0	1	1	0	1	0	0	0	0	3:19
12	GEORGE, TARA	0	0	0	0	0	0	0	1	1	0	0	0	0	0	0	1:19
TEAM REBOUNDS (INCLUDED IN TOTALS)								1	1	1							
TOTALS		18	43	1	3	11	24	11	16	27	14	48	10	14	2	10	160
TOTAL FG 1st HALF 5/14 35.7%		2nd HALF 13/29 44.8%		GAME 18/43 41.9%		DEADBALL											
3-POINT FG 1st HALF 1/2 50.0%		2nd HALF 0/1 0.0%		GAME 1/3 33.3%		Rebounds		4									
FREE THROWS 1st HALF 3/4 75.0%		2nd HALF 8/20 40.0%		GAME 11/24 45.8%													

OFFICIALS: TOMMY HALL, DENNIS JACKSON, ALI -M. CAMACHO

SCORE BY PERIODS

Technical: None

WARREN EAST	11	6	16	13	=	46
NICHOLAS COUNTY	14	9	18	7	=	48

Attendance: 4,325

COMMENTS: POINTS OFF TURNOVERS

SECOND CHANCE POINTS

WARREN EAST 11 NICHOLAS COUNTY 17 WARREN EAST 12 NICHOLAS COUNTY 11

WARREN EAST 'LADY RAIDERS' vs NICHOLAS COUNTY 'LADY JACKETS'
2nd Half Play by Play

Tip off at 8:00 p.m. on 03/27/93 at GIRLS STATE TOURNEY GM.15
Produced by the KHSAA Sweet Sixteen Stat Crew with FINAL III - a Product of LEXICO

Player	Team	NICHOLAS COUNTY
LINVILLE, RENEE	SCHANDING, E.	DENKINS, KIM, SMOOT, NIKKI, HATTON, CHRISTIE
Ball to LADY JACKETS		
7-14	50.0%	9-23 39.1%
4	6	14 ft Lane Jump shot by DENKINS, KIM
Assist by HATTON, CHRISTIE		
8-15	53.3%	10-24 41.6%
1	7	2 ft Lane Jump shot by DENKINS, KIM
Assist by SMOOT, NIKKI		
2-4	50.0%	11-25 44.0%
2	1	3 ft Lane Driving by HATTON, CHRISTIE
Foul on HATTON, CHRISTIE		
2	2	Foul on DENKINS, KIM
9-17	52.9%	12-27 44.4%
2 ft Lane Follow by DENKINS, KIM		
10-19	52.6%	13-29 44.8%
5	8	2 ft Lane Jump shot by DENKINS, KIM
Assist by HATTON, CHRISTIE		
1-2	50.0%	7-10 70.0%
HATTON, CHRISTIE, 2 Free Throws made 1st missed 2nd		
2	3	Foul on LINVILLE, RENEE
1-5	20.0%	14-34 41.1%
1	9	2 ft Lane Turnaround by SMOOT, NIKKI
Assist by DENKINS, KIM		
1-1	100%	15-35 42.8%
2	10	16 ft Right Angle Jump shot by SCHANDING, E.
Assist by DENKINS, KIM		
2-5	40.0%	16-36 44.4%
Driving Layup by LINVILLE, RENEE		
3-4	75.0%	8-12 66.6%
SMOOT, NIKKI, 1 & Bonus made 1st missed 2nd		

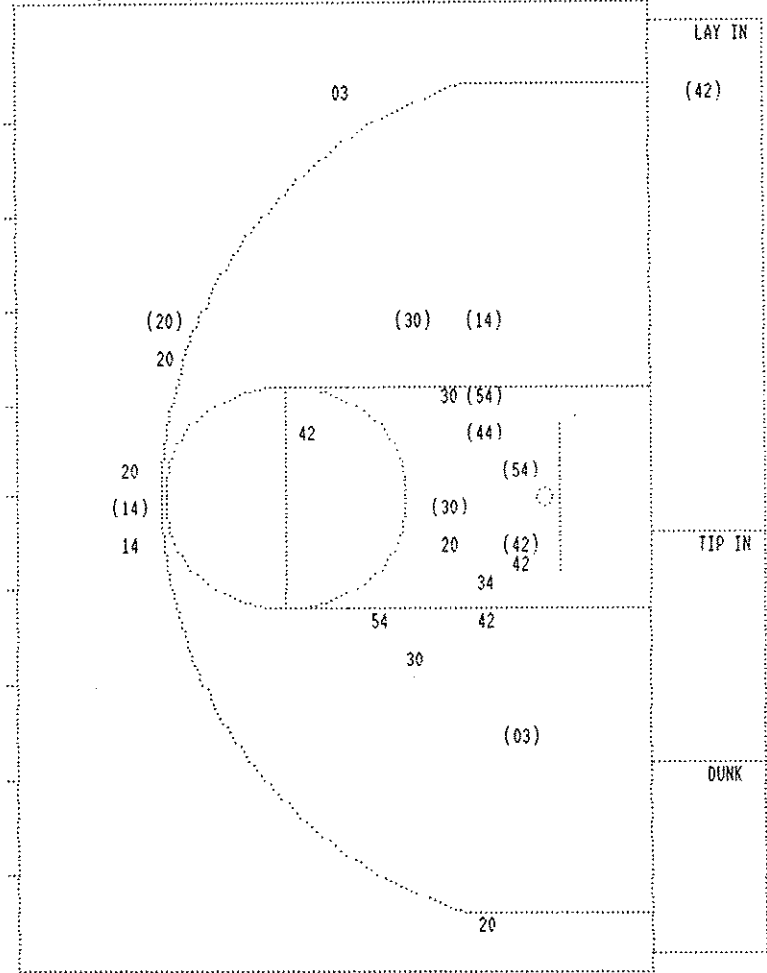
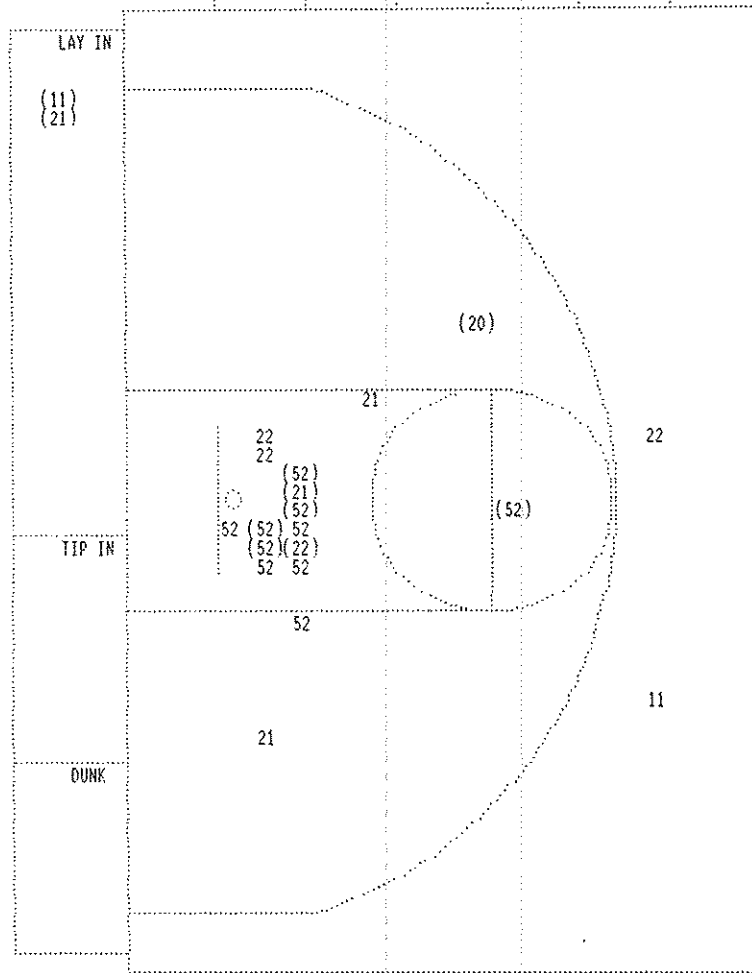
Time	Score	WARREN EAST	Player	Team
RATLIFF, DEANNA, ELROD, HEATHER, BRITT, JAMIE, SMITH, ALISON, MASSEY, MIRANDA				
3 7:57		Foul on BRITT, JAMIE	1	1
3 7:55	*25-17			
3 7:26	*27-17			
3 6:48	27-19*	12 ft Right Base Line Jump shot by RATLIFF, DEANNA	2-3	66.6%
Assist by MASSEY, MIRANDA			3	9-19 47.3%
3 6:35	*29-19			
3 6:20				
3 6:20		Sub In: COLE, TRACY Out: RATLIFF, DEANNA		
3 6:20	29-21*	ELROD, HEATHER, 2 Free Throws made both	2-2	100%
3 6:15			2-4	50.0%
3 6:08	29-23*	12 ft Left Side Jump shot by ELROD, HEATHER	2-4	50.0%
3 5:32	29-25*	4 ft Lane Jump shot by COLE, TRACY	1-1	100%
Assist by ELROD, HEATHER			1	11-22 50.0%
3 5:02	*31-25			
3 4:52		Foul on COLE, TRACY	3	2
3 4:27		Foul on COLE, TRACY	4	3
3 4:27		Sub In: FISHBACK, TRESIE Out: COLE, TRACY		
3 4:15		Foul on BRITT, JAMIE	2	4
3 4:12	*33-25			
3 3:59		Foul on SMITH, ALISON	2	5
3 3:59	*34-25			
3 3:50	34-27*	4 ft Lane Jump shot by ELROD, HEATHER	3-5	60.0%
3 2:33	34-29*	2 ft Lane Follow by BRITT, JAMIE	4-5	80.0%
3 2:33				
3 2:33	34-30*	BRITT, JAMIE, 1 Free Throw made	1-3	33.3%
3 2:33		Sub In: HIBBITT, RHONDA Out: SMITH, ALISON	3-5	60.0%
3 2:33	*36-30			
3 1:48		Foul on FISHBACK, TRESIE	2	6
3 1:13	*38-30			
3 0:59	38-33*	3 pt 22 ft Left Angle Jump shot by MASSEY, MIRANDA	2-8	25.0%
Assist by HIBBITT, RHONDA			2	14-28 50.0%
3 0:46	*40-33			
3 0:15		Foul on BRITT, JAMIE	3	7
3 0:15		Sub In: SMITH, ALISON Out: MASSEY, MIRANDA		
3 0:15		Sub In: TALLEY, S. Out: BRITT, JAMIE		
3 0:15	*41-33			

Player	Team	NICHOLAS COUNTY	Time	Score	WARREN EAST	Player	Team		
LINVILLE, RENEE	SCHANDING, E.	DENKINS, KIM	SMOOT, NIKKI	HATTON, CHRISTIE	HIBBITT, RHONDA	SMITH, ALISON	ELROD, HEATHER	BRITT, JAMIE	TALLEY, S.
3	4	Foul on LINVILLE, RENEE			4 5:50	Ball to LADY RAIDERS			
					4 5:50	Sub In: MASSEY, MIRANDA Out: HIBBITT, RHONDA			
4	5	Foul on LINVILLE, RENEE Sub In: GEORGE, TARA Out: LINVILLE, RENEE			4 5:50	2 ft Lane SHOT Off Fast Break by TALLEY, S.			
2-5	33.3%	17-40	42.5%	Driving Layup by SMOOT, NIKKI	4 5:21	Assist by BRITT, JAMIE			
					4 5:21				
					4 5:17	6 ft Left Side Follow by TALLEY, S.			
4-5	90.0%	9-13	69.2%	Sub In: HOPKINS, M. Out: GEORGE, TARA SMOOT, NIKKI, 1 Free Throw made	4 4:43	*43-37			
					4 4:43	Foul on SMITH, ALISON			
					4 4:42				
					4 4:42	*44-37			
11-22	50.0%	18-42	42.9%	3 ft Lane Follow by DENKINS, KIM	4 4:24	*44-30			
					4 4:24	3 pt 22 Ft Straight Away Bank by SMITH, ALISON			
					4 3:54	*46-40			
					4 3:35	Assist by ELROD, HEATHER			
					4 3:35	REB: 23 A: 10 BLK: 1 TO: 10 PF: 5			
					4 3:18	S: 8 FT: 9-13 69.2% FG: 18-42 42.9%			
					4 3:09	No. 1 NICHOLAS COUNTY TIME - O U T			
					4 3:09	REB: 21 A: 11 BLK: 3 TO: 19 PF: 8			
					4 3:08	S: 5 FT: 3-5 60.0% FG: 17-35 48.5%			
3	6	Sub In: LINVILLE, RENEE Out: HOPKINS, M.			4 3:28	Foul on SMITH, ALISON			
3	7	Foul on HATTON, CHRISTIE			4 2:28	Sub In: HIBBITT, RHONDA Out: SMITH, ALISON			
					4 2:28				
4-6	66.6%	9-14	64.2%	SMOOT, NIKKI, 1 & Bonus missed 1st	4 2:22	*46-42* Driving Layup by BRITT, JAMIE			
					4 2:16	Assist by ELROD, HEATHER			
					4 2:16	Foul on MASSEY, MIRANDA			
0-1	00.0%	9-15	60.0%	SCHANDING, E., 1 & Bonus missed 1st	4 1:34	Foul on TALLEY, S.			
					4 1:34	*47-42			
2-4	50.0%	10-17	58.8%	LINVILLE, RENEE, 1 & Bonus made 1st missed 2nd	4 1:28	Sub In: SMITH, ALISON Out: TALLEY, S.			
5		8		Foul on LINVILLE, RENEE	4 1:28				
					4 1:28	Sub In: HOPKINS, M. Out: LINVILLE, RENEE			
					4 1:28	REB: 25 A: 10 BLK: 1 TO: 14 PF: 8			
					4 1:28	S: 10 FT: 10-17 58.8% FG: 18-43 41.8%			
					4 1:28	No. 2 NICHOLAS COUNTY TIME - O U T			
					4 1:28	REB: 25 A: 12 BLK: 3 TO: 22 PF: 11			
					4 1:28	S: 6 FT: 3-5 60.0% FG: 18-38 47.3%			
					4 1:28	*47-44* MASSEY, MIRANDA, 1 & Bonus made both			
					4 0:55	Foul on ELROD, HEATHER			
					4 0:55	No. 1 WARREN EAST TIME - O U T			
					4 0:55	REB: 25 A: 12 BLK: 3 TO: 22 PF: 12			
					4 0:55	S: 5 FT: 5-7 71.4% FG: 18-38 47.3%			
1-2	50.0%	11-19	57.8%	HOPKINS, M., 1 & Bonus made 1st missed 2nd	4 0:54	*48-44			
3		9		Foul on DENKINS, KIM	4 0:54				
					4 0:54	ELROD, HEATHER, 1 & Bonus missed 1st			
4-7	57.1%	11-20	55.0%	SMOOT, NIKKI, 1 & Bonus missed 1st	4 0:49	Foul on ELROD, HEATHER			
					4 0:49				
					4 0:21	Foul on ELROD, HEATHER			

2nd Half Play by Play (continued)

Player	Team	NICHOLAS COUNTY	Time	Score	WARREN EAST	Player	Team
3-5	60.0%	11-21	52.3%	DENKINS, KIM, 1 & Bonus missed 1st	4 0:31		
					4 0:20	Sub In: COLE, TRACY Out: HIBBITT, RHONDA	
					4 0:15	*48-46* 10 ft Left Side Jump shot by SMITH, ALISON	
					4 0:15	REB: 27 A: 10 BLK: 2 TO: 14 PF: 9	
					4 0:15	S: 10 FT: 11-21 52.3% FG: 18-43 41.8%	
					4 0:15	No. 2 WARREN EAST TIME - O U T	
					4 0:15	REB: 29 A: 12 BLK: 3 TO: 22 PF: 16	
					4 0:15	S: 6 FT: 5-8 62.5% FG: 19-41 46.3%	
1-4	25.0%	11-23	47.8%	HOPKINS, M., 2 Shot Intentional missed both	4 0:09	Foul on COLE, TRACY	
					4 0:09	Sub In: TALLEY, S. Out: COLE, TRACY	
					4 0:09		
					4 0:05	Foul on SMITH, ALISON	
					4 0:05	Sub In: HIBBITT, RHONDA Out: SMITH, ALISON	
					4 0:05	REB: 29 A: 12 BLK: 3 TO: 22 PF: 16	
					4 0:05	S: 6 FT: 5-8 62.5% FG: 19-41 46.3%	
					4 0:05	No. 3 WARREN EAST TIME - O U T	
1-3	33.3%	11-24	45.8%	HATTON, CHRISTIE, 1 & Bonus missed 1st	4 0:05	Sub In: RATLIFF, DEANNA Out: TALLEY, S.	
					4 0:05		

SECOND HALF SHOT CHART Produced by the KHSAA Sweet Sixteen Stat Crew with FINAL III - a Product of LEXICON SPORTS™



NICHOLAS COUNTY				
Player		Player		Player
11 - LINVILLE, J	1 / 2	50.0%		
20 - SCHANDING, K	1 / 1	100.0%		
52 - DENKINS, K	5 / 10	50.0%		
21 - SHOOT, NIK	2 / 4	50.0%		
22 - HATTON, CHR	1 / 4	25.0%		
Layups	1-9 Ft	10-15 Ft	Over 15 Ft	3 Pointers Total
	2 / 2	6 / 14	1 / 2	1 / 3
	100.0%	42.9%	50.0%	33.3%
				19 / 21
				47.6%

WARREN EAST				
Player		Player		Player
03 - RATLIFF, D	1 / 2	50.0%	34 - FISHBACK, T	0 / 1 0.0%
30 - ELROD, HEA	2 / 4	50.0%	44 - COLE, TRAC	1 / 1 100.0%
42 - BRITT, JAH	2 / 5	40.0%	54 - TALLEY, S.	2 / 3 66.6%
14 - SMITH, ALI	2 / 3	66.6%		
20 - HASSEY, MI	1 / 5	20.0%		
Layups	1-9 Ft	10-15 Ft	Over 15 Ft	3 Pointers Total
	1 / 1	5 / 10	3 / 6	2 / 7
	100.0%	50.0%	50.0%	28.6%
				11 / 24
				45.8%

VISITORS (Last Name, First)

NO.	WARREN EAST	Tot FG		3-POINT		FT	FTA	Rebounds			PF	TP	A	TO	BLK	S	TIME
		FG	FGA	FG	FGA			OFF	DEF	TOT							
03	RATLIFF, DEANNA	1	1	0	0	0	0	0	1	1	0	2	0	0	0	0	4:07
30	ELROD, HEATHER	1	3	0	0	0	0	1	3	4	1	2	0	3	0	0	16:00
42	BRITT, JAMIE	3	4	0	0	0	2	1	2	3	0	6	0	1	1	0	14:31
14	SMITH, ALISON	0	1	0	0	0	0	2	0	2	1	0	2	3	0	0	13:06
20	MASSEY, MIRANDA	1	5	0	1	0	0	0	1	1	1	2	2	4	0	1	15:04
44	COLE, TRACY	0	0	0	0	0	0	0	0	0	2	0	1	0	0	0	2:36
34	FISHBACK, TRESIE	0	1	0	0	0	0	0	1	1	1	0	0	0	0	0	6:14
12	HIBBITT, RHONDA	1	1	1	1	0	0	0	0	0	1	3	1	2	0	0	3:50
54	TALLEY, S.	1	1	0	0	0	0	1	0	1	1	2	0	0	0	0	4:32
TEAM REBOUNDS (INCLUDED IN TOTALS)																	
TOTALS		8	17	1	2	0	2	5	8	13	8	17	6	13	0	2	80
TOTAL FG 1st HALF 5/10 50.0%		2nd HALF 3/7 42.9%		GAME 8/17 47.1%		DEADBALL											
3-POINT FG 1st HALF 1/1 100.0%		2nd HALF 0/1 0.0%		GAME 1/2 50.0%		REBOUNDS		2									
FREE THROWS 1st HALF 0/0 0.0%		2nd HALF 0/2 0.0%		GAME 0/2 0.0%													

HOME (Last Name, First)

NO.	NICHOLAS COUNTY	Tot FG		3-POINT		FT	FTA	Rebounds			PF	TP	A	TO	BLK	S	TIME
		FG	FGA	FG	FGA			OFF	DEF	TOT							
11	CINVILLE, RENEE	1	3	0	1	1	2	0	0	0	1	3	1	1	0	1	16:00
20	SCHANDING, E.	0	0	0	0	0	0	0	0	0	0	0	1	1	0	1	16:00
52	DENKINS, KIM	6	13	0	0	3	4	5	3	8	1	15	0	0	0	1	15:17
21	SHOOT, NIKKI	0	3	0	0	2	2	0	0	0	2	2	0	1	0	2	15:19
22	HAYTON, CHRISTIE	1	3	1	2	0	0	0	1	1	1	3	3	1	0	1	16:00
53	HOPKINS, M.	0	0	0	0	0	0	0	0	0	0	0	0	0	0	0	0:43
12	GEORGE, TARA	0	0	0	0	0	0	0	1	1	0	0	0	0	0	0	0:41
TEAM REBOUNDS (INCLUDED IN TOTALS)																	
TOTALS		8	22	1	3	6	8	5	5	10	5	23	5	4	0	6	80
TOTAL FG 1st HALF 5/14 35.7%		2nd HALF 3/8 37.5%		GAME 8/22 36.4%		DEADBALL											
3-POINT FG 1st HALF 1/2 50.0%		2nd HALF 0/1 0.0%		GAME 1/3 33.3%		Rebounds		2									
FREE THROWS 1st HALF 3/4 75.0%		2nd HALF 3/4 75.0%		GAME 6/8 75.0%													

OFFICIALS: TOMMY HALL, DENNIS JACKSON, ALT.-M. CAMACHO

Technical: None

SCORE BY PERIODS

WARREN EAST	11	6	=	17
NICHOLAS COUNTY	14	9	=	23

Attendance:

COMMENTS: POINTS OFF TURNOVERS

WARREN EAST 5 NICHOLAS COUNTY

SECOND CHANCE POINTS

WARREN EAST 10 NICHOLAS COUNTY 5

WARREN EAST "LADY RAIDERS" vs NICHOLAS COUNTY "LADY JACKETS"
1st Half Play by Play

PAGE : 1

Tie off at 8:00 P.M. on 03/27/93 at GIRLS STATE TOURNEY, GM 15
Produced by the KHSAA Sweet Sixteen Stat Crew with FINAL TIP - a Product of LEXI

Player	Team	NICHOLAS COUNTY
LINVILLE, RENEE, SCHANDING, E., DENKINS, KIM, SMOOT, NIKKI, HATTON, CHRISTIE		
1-1	100%	1-1 100% 2 ft Lane Jump shot by DENKINS, KIM Assist by HATTON, CHRISTIE
1	1	
2-5	40.0%	2-5 40.0% 2 ft Lane Turnaround by DENKINS, KIM Assist by HATTON, CHRISTIE
2	2	
1-2	50.0%	1-2 50.0% DENKINS, KIM, 2 Free Throws missed 1st made 2nd
1-1	100%	3-7 42.8% 3 pt 23 ft Right Angle Jump shot by HATTON, CHRISTIE Assist by LINVILLE, RENEE
1	3	
3-8	37.5%	4-9 44.4% 2 ft Lane Jump shot by DENKINS, KIM
1	1	
1	2	
2-2	100%	3-4 75.0% SMOOT, NIKKI, 2 Free Throws made both
1-2	50.0%	5-13 38.4% Layup Off Fast Break by LINVILLE, RENEE Assist by SCHANDING, E.
1	4	
Sub In: HOPKINS, M. Out: DENKINS, KIM		

Time	Score	WARREN EAST	Player	Team
1 7:18	*2-0	RATLIFF, DEANNA, ELROD, HEATHER, BRITT, JAMIE, SMITH, ALISON, MASSEY, MIRANDA Ball to LADY RAIDERS		
1 7:03		Foul on ELROD, HEATHER	1	1
1 6:35		Foul on SMITH, ALISON	1	2
1 5:59	*4-0			
1 5:44	4-2*	8 ft Right Side Jump shot by RATLIFF, DEANNA Assist by MASSEY, MIRANDA	1-1	100% 1-2 50.0%
1 5:04		Foul on MASSEY, MIRANDA	1	1
1 5:04	*5-2		1	3
1 4:57	5-4*	4 ft Lane Jump shot by BRITT, JAMIE Assist by SMITH, ALISON	1-1	100% 2-3 66.6%
			1	2
1 4:34	*8-4			
1 3:59	*10-4	Sub In: COLE, TRACY Out: RATLIFF, DEANNA		
1 3:53				
1 3:53		WARREN EAST No. 1		
1 3:23				
1 3:15	10-6*	4 ft Lane Jump shot by ELROD, HEATHER Assist by COLE, TRACY	1-1	100% 3-4 75.0%
1 2:20			1	3
1 2:00		Foul on COLE, TRACY	1	4
1 1:47	10-8*	Driving Layup by MASSEY, MIRANDA	1-2	50.0% 4-7 57.1%
1 1:17		Foul on COLE, TRACY	2	5
1 1:17		Sub In: FISHBACK, TRESIE Out: COLE, TRACY		
1 1:17	*12-8			
1 1:05	*14-8			
1 0:43		Sub In: HIBBITT, RHONDA Out: MASSEY, MIRANDA		
1 0:43				
1 0:30	14-11*	3 pt 22 ft Straight Away Jump shot by HIBBITT, RHONDA Assist by SMITH, ALISON	1-1	100% 5-10 50.0%
			2	4

REB: 5 A: 3 BLK: 0 TO: 0 PF: 0
S: 2 FT: 1-2 50.0% FG: 4-9 44.4%

REB: 1 A: 2 BLK: 0 TO: 4 PF: 3
S: 0 FT: 0-0 00.0% FG: 2-3 66.6%

WARREN EAST "LADY RAIDERS" vs NICHOLAS COUNTY "LADY JACKETS"
1st Half Play by Play

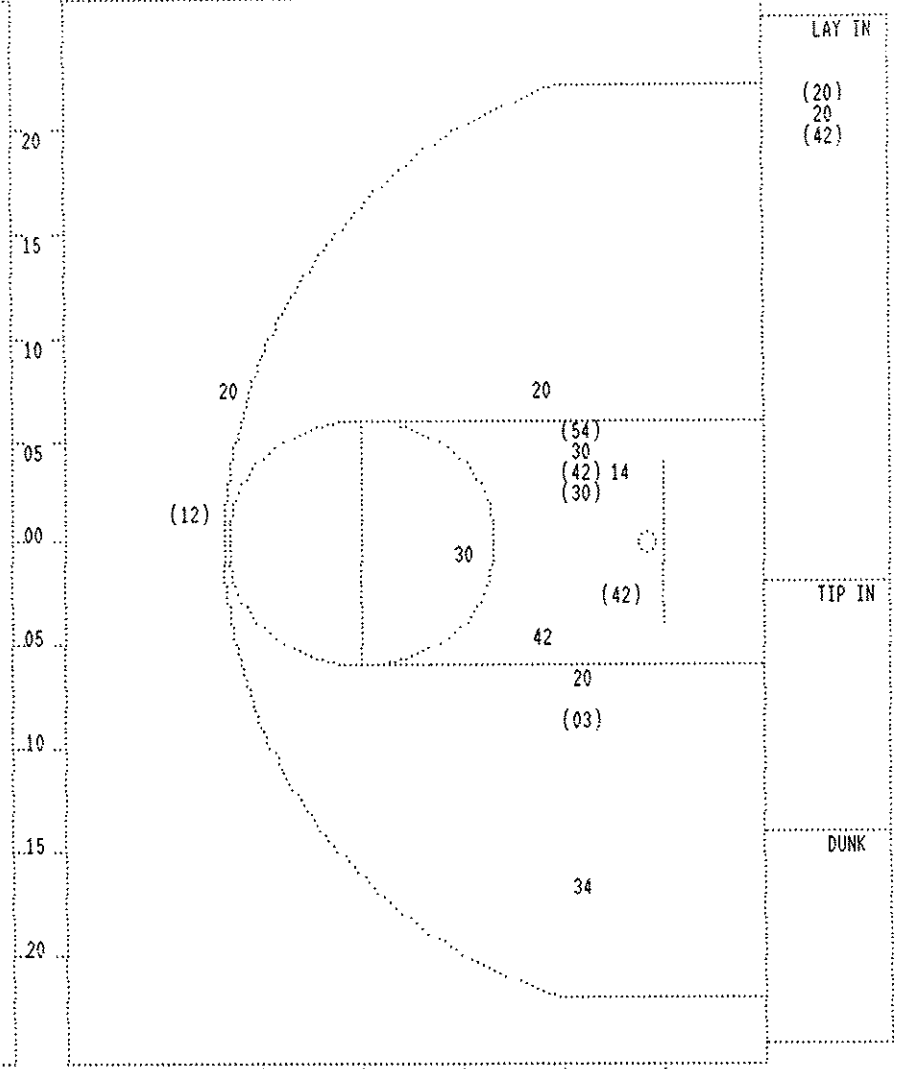
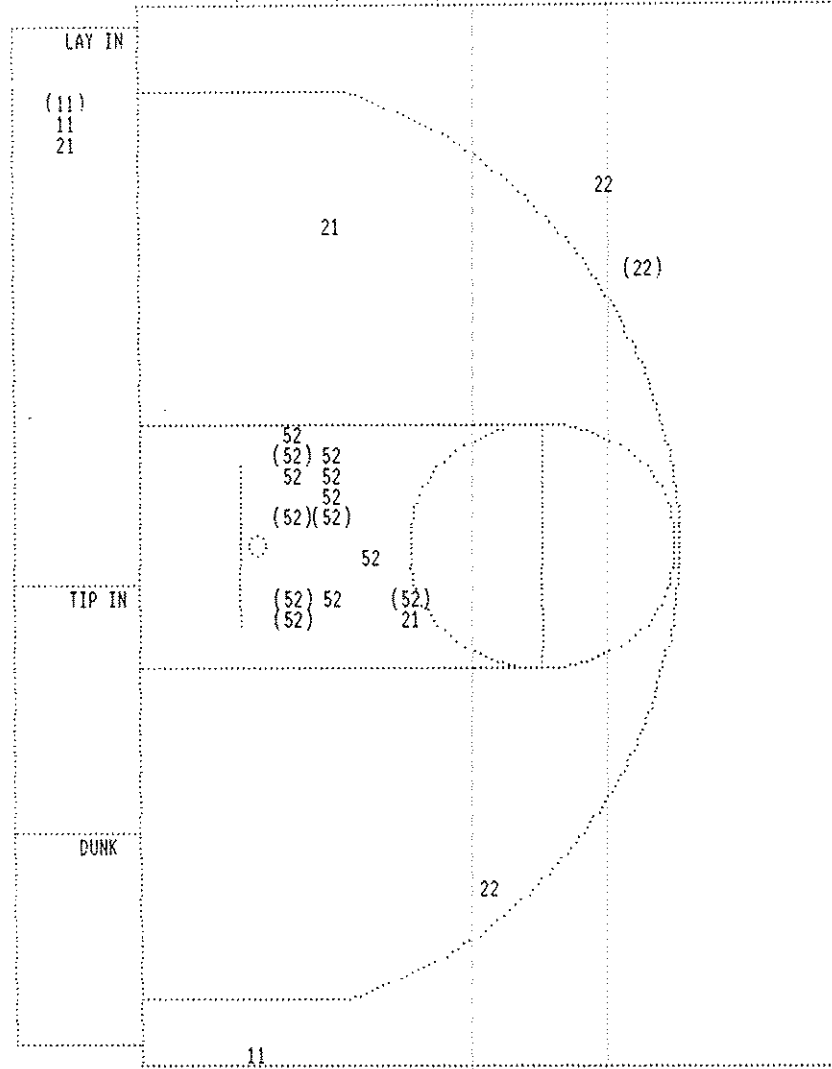
Tip off at 8:00 p.m. on 03/27/93 at GIRLS STATE TOURNEY GM 15
Produced by the KHSAA Sweet Sixteen Stat Crew with FINAL III - a Product of LEXICO

PAGE : 2

Player	Team	NICHOLAS COUNTY
LINVILLE, RENEE, SCHANDING, E., DENKINS, KIM, SMOOT, NIKKI, HATTON, CHRISTIE		
1	3	Foul on SMOOT, NIKKI
4-10	40.0%	6-16 37.5% 6 ft Lane Jump shot by DENKINS, KIM
1	4	Foul on LINVILLE, RENEE Sub In: GEORGE, TARA Out: SMOOT, NIKKI
1-2	50.0%	4-6 66.6% LINVILLE, RENEE, 2 Free Throws missed 1st made 2nd Sub In: SMOOT, NIKKI Out: GEORGE, TARA
5-12	41.6%	7-20 35.0% 4 ft Lane Follow by DENKINS, KIM
3-4	75.0%	6-8 75.0% DENKINS, KIM, 2 Free Throws made both
6-13	46.1%	8-21 38.0% 3 ft Lane Jump shot by DENKINS, KIM Assist by HATTON, CHRISTIE
3	5	Foul on SMOOT, NIKKI
2	5	Sub In: GEORGE, TARA Out: SCHANDING, E. Sub In: SCHANDING, E. Out: SMOOT, NIKKI

Time	Score	WARREN EAST	Player	Team
ELROD, HEATHER, BRITT, JAMIE, SMITH, ALISON, HIBBITT, RHONDA, FISHBACK, TRESIE Ball to LADY RAIDERS				
2 7:49				
2 7:47		Sub In: MASSEY, MIRANDA Out: SMITH, ALISON		
2 7:29	14-13*	2 ft Lane Turnaround by BRITT, JAMIE Assist by HIBBITT, RHONDA	2-3	66.6% 6-11 54.5%
2 7:15		Player Control Foul on HIBBITT, RHONDA	1	5
2 6:40	*16-13		1	6
2 5:50	16-15*	Layup Off Fast Break by BRITT, JAMIE Assist by MASSEY, MIRANDA	3-4	75.0% 7-12 58.3%
2 4:53			2	6
2 4:53				
2 4:53		Sub In: SMITH, ALISON Out: HIBBITT, RHONDA		
2 4:53		BRITT, JAMIE, 2 Free Throws missed both	0-2	00.0% 0-2 00.0%
2 4:32		Foul on FISHBACK, TRESIE	1	7
2 4:32		Sub In: TALLEY, S. Out: BRITT, JAMIE		
2 4:32	*17-15			
2 4:16				
2 3:31	*19-15			
2 3:13	19-17*	6 ft Left Side Jump shot by TALLEY, S.	1-1	100% 8-16 50.0%
2 3:03		Sub In: BRITT, JAMIE Out: FISHBACK, TRESIE		
2 2:20		Foul on TALLEY, S.	1	8
2 2:20	*21-17			
2 1:19	*23-17			
2 0:04				
2 0:04				
2 0:04				

FIRST HALF SHOT CHART Produced by the KHSAA Sweet Sixteen Stat Crew with FINAL III - a Product of LEXICON SPORTS™



NICHOLAS COUNTY					
Player		Player		Player	
11 - LINVILLE, J	1 / 3 33.3%				
52 - DENKINS, K	6 / 13 46.1%				
21 - SMOOT, NIK	0 / 3 0.0%				
22 - HATTON, CHR	1 / 3 33.3%				
Layups	1-9 Ft	10-15 Ft	Over 15 Ft	3 Pointers	Total
1 / 3	6 / 14	0 / 2	1 / 3	8 / 22	
33.3%	42.9%	0.0%	33.3%	36.4%	

WARREN EAST					
Player		Player		Player	
03 - RATLIFF, D	1 / 1 100.0%	12 - HIBBITT, R	1 / 1 100.0%		
30 - ELROD, HEA	1 / 3 33.3%	34 - FISHBACK, T	0 / 1 0.0%		
42 - BRITT, JAM	3 / 4 75.0%	54 - TALLEY, S.	1 / 1 100.0%		
14 - SMITH, ALI	0 / 1 0.0%				
20 - MASSEY, MI	1 / 5 20.0%				
Layups	1-9 Ft	10-15 Ft	Over 15 Ft	3 Pointers	Total
2 / 3	5 / 11	0 / 1	1 / 2	8 / 17	
66.7%	45.5%	0.0%	50.0%	47.1%	